

R-F-M

THE MIDLANDS MART

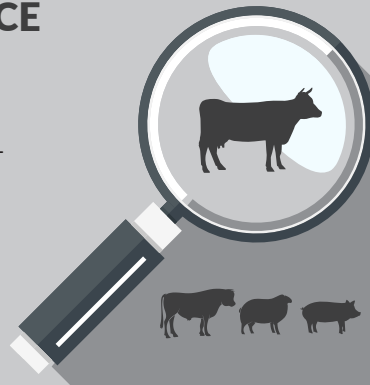
— RUGBYFARMERSMART.COM —

The Charolais Pavilion, Avenue M, Stoneleigh Park,
Kenilworth, Warwickshire CV8 2RG
02476 697731 | www.rugbyfarmersmart.com | 43/139/8013
Office hours: Monday to Friday - 9.00am - 5.00pm
Opening Time: Gates open at 5.30am until further notice

MARKET REPORT FOR MONDAY 31ST JULY 2023

MARKET AT A GLANCE

Prime Lamb SQQ 261p/kg
(1656 Avg £114.50)
Prime Lambs to 307p/kg & £161
Ewes to £178 (908 Avg £107)
Store Lambs to £104



THURSDAY 10TH AUGUST
SALE OF STORE CATTLE & STORE LAMBS

Catalogues & Entry Forms available by post, email or on the website
www.rugbyfarmersmart.com | admin@rugbyfarmersmart.com

CALLING ALL BUDDING PHOTOGRAPHERS

Do you know of a trainee photographer that would like to add to their portfolio or just someone that has an interest in photography?

They Would need to be available on Monday 27th November (day) photographing livestock and people and on Friday 1st December (evening)

Please get in touch with Sophie admin@rugbyfarmersmart.com or call 02476697731

MONDAY 7TH AUGUST

**ANDY & LYNDY CONCLUDE LENS LIGHT TRACTOR RALLY
HERE AT THE MARKET.**

PLEASE COME AND JOIN THEM

**THEY HAVE DONE AN AMAZING JOB RAISING AWARENESS OVER THE
LAST YEAR AND HALF AND SO FAR HAVE RAISED OVER £126,000 FOR
PAPYRUS, FCN & YELLOW WELLIES!!!**

Len Eadon 1999-2022 Tribute page

<https://leneadon.muchloved.com/?fbclid=IwAR1QM9qsvxqscmyehDUuwuJvjrR4KICliDqyezWbDYBEAsDaB164bZn50g4>

Photograph Request

***Rugby Primestock Society are after any old pictures from past Rugby
Primestock Shows for this year's 50th anniversary.***

***please could copies be emailed to Sophie admin@rugbyfarmersmart.com or
sent to the market office. We can scan the photos and return the originals.***

STORE CATTLE SALES 2023



JULY 13TH
AUGUST 10TH
SEPTEMBER 14TH
OCTOBER 12TH & 19TH
NOVEMBER 2ND, 9TH & 23RD
DECEMBER 14TH



+

STORE LAMBS

CONTACT 02476697731 OR EMAIL ADMIN@RUGBYFARMERSMART.COM
TO BOOK IN YOUR ENTRIES

CALF SALES 2023

JUNE 12TH & 26TH
JULY 10TH & 24TH
AUGUST 7TH & 21ST
SEPTEMBER 4TH & 18TH
OCTOBER 2ND, 16TH & 30TH
NOVEMBER 6TH & 20TH
DECEMBER 4TH & 18TH



CONTACT 02476697731 OR EMAIL ADMIN@RUGBYFARMERSMART.COM
TO BOOK IN YOUR ENTRIES

SPRING LAMBS: 1656 FORWARD SQQ 261P/KG AVG £114.50



Trade slightly better than expected despite a poor quality yarding of lambs short on meat for the whole. An SQQ of 261p/kg a nice return for a yarding of poor percenting lambs as the weather seems to be taking the backs away from them. Trade very hard as Sales continue to be slow with a short number of Buyers today and then large Accounts that did turn up leaving within Minutes unable to compete at the trade. Lambs very much in the annual Doldrums. Best end lambs wanted and topping today for Blue De Maine from Pete Darby with 41kg at 307p/kg ahead of J Rutter 40kg at 303p/kg and Taylor & Sons 40kg 398p/kg. Good Export lambs regularly 275p/kg plus albeit lean Export weight lambs very much 250-255p/kg. Weighted Lambs still the easiest sold topping at 283p/kg for 52kg Blue Texels from K Buckby, Northampton also selling 47kg to 281p/kg. Di Hopcraft 46kg to 278p/kg and Humphrey Livestock 47kg to 277p/kg equal with D Ofield. An all in avg of £114.50 a marvellous return with a lot of small Teg bred Lambs included today. Export weights topping out at £130 for 45kg from DS & LE Wadland with Messrs Fountaine £127 for 45.5kg and Phil Darby 41kg to £126. Overall plenty of money for weight topping at £161 for overnight lambs from K Attfield scaling 62kg selling others at £150 and £149. Plenty of weight over £140. Trade still not at a level to promote Sales. Hopefully the end of the first Summer Holidays will bring people back to Europe and back to eating lambs.

Auctioneer: Thomas Wrench

**PLEASE COULD ALL VENDORS BOOK IN STOCK,
EITHER BY A QUICK CALL, TEXT OR EMAIL THANK YOU!**

Office: 02476697731 | Email: admin@rugbyfarmersmart.com | Tom: 07774723758

Sunday lairage is now open from 9am-3:00pm
Gates close 3:00pm **STRICTLY.**

SPRING LAMBS SQQ 261p/kg

Per Kilo **under 45.5kg**

Bleu Du Miane	41.00kg	307ppk	Phil Darby Structures
Beltex x	40.00kg	303ppk	J Rutter & Son
Texel x	40.00kg	298ppk	Taylor & Son
Texel x	36.00kg	297ppk	G L Pickering
Bleu Du Maine	37.00kg	295ppk	Phil Darby Structures

Per HEAD

Texel	45.00kg	£135.00	DS & LE Wadland
Texel	45.50kg	£130.00	G R Fountaine & Son
Bleu Du Maine	41.00kg	£130.00	Phil Darby Structures
Charollais x	44.00kg	£129.00	K Buckby
Texel x	44.50kg	£128.00	DS & LE Wadland

Per Kilo **over 45.5kg**

Texel x	52.00kg	283ppk	K Buckby
Texel x	47.00kg	281ppk	K Buckby
Texel x	46.00kg	278ppk	PD & DM Hopcraft
Texel x	47.00kg	277ppk	Humphrey Livestock
Texel x	48.00kg	277ppk	D A Ofield

Per HEAD

Charollais x	62.00kg	£161.00	K Attfield
Charollais x	56.00kg	£150.00	K Attfield
Charollais x	56.50kg	£149.00	K Attfield
Texel x	52.00kg	£147.00	K Buckby
Charollais x	54.00kg	£145.00	K Attfield

****FAT CATTLE TIMINGS****
COWS 8:30AM
PRIME CATTLE 9AM

CULL EWES: 908 FORWARD



Just shy of a 1000 ewes again. A fast step forward in trade today as more Buyers come to ringside and Ewe numbers dry Nationally. No real quality to speak of on show and a very lightweight entry. Trade topping at £178 for a Charolais Ram from C Thomas. Beltex Rams from W H Allan £176. Texel x not particularly a strong showing but topping out at £165 and regularly £150 plus. Suffolks to £152 for a large pen from MFH Farming and £146 from D Wadland. Suffolks generally £130 plus throughout. Mules the real trade topping at £140 for P & LA Gibbs with others £129 for a pen of 19 for RJ Paybody & Sons. Any meted Ewes over £110 today. A wealth of poor Ewes about which is a surprise considering the amount of Grass at foot. Perhaps grazing Ewes the best prospect for Feeding Margins.

Auctioneer: *Thomas Wrench*

EWES

Charollais x	£178	C W Thomas	Mule x	£165	RW Beale
Beltex	£176	W H Allan	Beltex	£165	W H Allan
Texel x	£165	L Swerling	X Bred	£160	Taylor & Son

STORE LAMBS: 46 FORWARD



Fantastic trade across the board , averaging £94.31

Top price of £104 for R Elliott's Charollais lambs

Next special sale of Store Lambs is on Thursday 10th August

Auctioneer :*Tim Webster*

COULD YOU BENEFIT FROM A GRANT TO UPGRADE OR IMPROVE YOUR CALF AND CATTLE BUILDINGS?



GOVERNMENT GRANTS OF BETWEEN £15,000 AND £500,000 ARE BEING MADE AVAILABLE FOR FARMERS TO UPGRADE CURRENT OR BUILD NEW CALF HOUSING FACILITIES.

UNDER THE ANIMAL HEALTH AND WELFARE INFRASTRUCTURE GRANT, THE FUNDS WILL BE AVAILABLE FOR PROJECTS AIMING TO IMPROVE CALF HEALTH AND WELFARE, INTRODUCE INNOVATION AND ENHANCE ENVIRONMENTAL SUSTAINABILITY.

THE GRANTS ARE COMPETITIVE AND WILL COVER UP TO 40% OF THE COSTS

APPLICATIONS OPEN LATER THIS SUMMER

For more information please speak to
Sophie Mockler on **07538 439439** today
or email rural@sheldonbosleyknight.co.uk

**SHELDON
BOSLEY
KNIGHT**

LAND AND
PROPERTY
PROFESSIONALS

SALES

LETTINGS

RURAL

PLANNING &
ARCHITECTURE

COMMERCIAL

SURVEYS &
VALUATIONS

NEW
HOMES

AUCTIONS

BLOCK
MANAGEMENT

LAND &
DEVELOPMENT

CONVEYANCING



Farm insurance, the way it should be

We're a family-run business and pride ourselves on forging long term relationships with our farming and agricultural clients. Covering the Midlands, South West and South East, we deliver an extensive range of farm, agri business and equine policies tailored to you.

Farm & Equine **01865 290915**

General **01865 844998**

 Follow us **@County_Farm**

www.county-insurance.co.uk/farms



Independent Insurance Brokers County Insurance Services Limited. Address and Registered Office: County House, Glyme Court, Langford Lane, Kidlington, Oxon OX5 1LQ. Authorised and regulated by the Financial Conduct Authority (FCA) (FRN: 597267). Company registered in England No. 08411634

On instructions from The Executors of Mr Norman Astley.
A complete smallholder's dispersal sale at
Croftlands Farm, Broadwell, Rugby, Warwickshire, CV23 8HB.

To include: 1962 Fordson Dexta Tractor,
1975 Zetor 5718 Tractor, c.1998 Aebi Rasant Combi-Track, 1947
Ransomes roller mower, 1982 Same Antres II 130hp tractor.
Together with: 1932 George Fowell dumper truck, 1953 JCB 2B Digger,
2008 LDV Maxus van, 2004 Peugeot 206 commercial van,
2001 Seat Leon Car, 1998 LDV Convoy Pick up.
Plus: Trailers, Vintage Farm Equipment, Rural Bygones, Livestock
Equipment, Garden Equipment, Agricultural Requisites,
Workshop/Warehouse Equipment.

FOR SALE BY AUCTION ON SATURDAY 19TH AUGUST 2023 AT 10.30AM.

FORTHCOMING AUCTION:

On behalf of Andrew Baughan and others.
A collective machinery sale at Oak Farm, Upper Boddington,
Nr Daventry, NN11 6DW
on Saturday 7th October 2023 at 10.30am.
Entries are invited.

FOR SALE

Mitsubishi Trojan L200 Truck for sale.

Crew cab, Red, 97000 miles.

First Registered 2013. One owner only. 8 months MOT.

Very tidy condition

£7500.00 plus VAT.

First to view will buy

Tel 07930548933 (Jack).

07760 317410 (David).

RFM
THE MIDLANDS MART

BREEDING SHEEP SALES



JULY 28th First Annual Breeding Sheep Fair

AUGUST 25th Breeding Sheep Fair Plus NSA Ram Sale

SEPTEMBER 16th Ewe Lamb & Wiltshire Horn Show & Sale

SEPTEMBER 29th Annual Ram Fair including Breeding Sheep

CONTACT 02476697731 OR EMAIL
ADMIN@RUGBYFARMERSMART.COM
TO BOOK IN YOUR ENTRIES



AUTO GATES LTD

Bridge Farm, Holt Lane, Ashby Magna, LE17 5NJ

Trevor 07498993897/01455 202791

Email: tjautogate@gmail.com

Fitted to new or existing gates, wood or steel automated.

Sliding, swinging or cantilever.



Fertility



Health Planning



Lameness



Infectious Diseases Consultancy



Mastitis

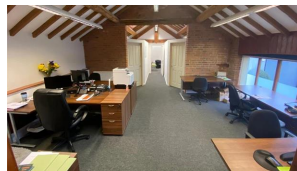


TB Testing



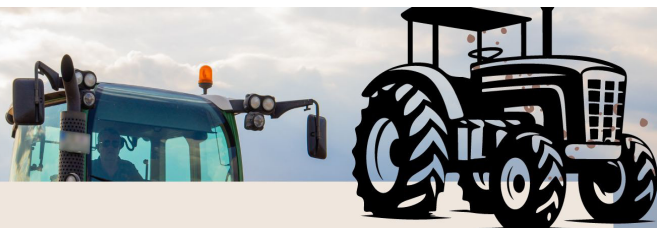
In House Lab Testing

Tel – 01455241080
Email – info@fossewayfarmvets.co.uk



“We are a growing farm vet practise covering much of the East Midlands. We have new team members on board and have the capacity to take on new farm clients. We’d love to talk to you about your livestock health and farming business – please call the office in 01455241080 if you’d like to speak to one of the team.”

R-F-M
THE MIDLANDS MART

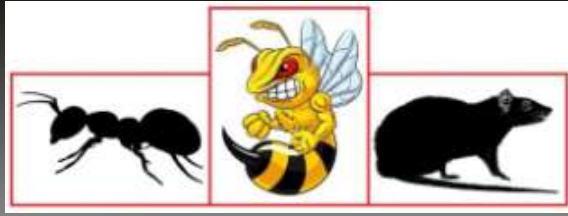


MACHINERY AUTUMN SALE

FRIDAY 27TH OCTOBER

CONTACT 02476697731 OR EMAIL
ADMIN@RUGBYFARMERSMART.COM
TO BOOK IN YOUR ENTRIES





RDB Pest Control

Reliable | Trustworthy | Fast | Effective
Competitive Prices

Ryan Brunt

07922 091 459

www.rdbpestcontrol.co.uk

Why You Should Choose Us

- ✓ Cater for Red Tractor and Farm Assurance Schemes
- ✓ Wide ranging experience on Farms with over 25 existing routine agricultural clients
- ✓ Fully qualified - RSPH Level 2 in Pest Control
- ✓ Trustworthy and security vetted
- ✓ Prompt, reliable fast response

A selection of sites where I have experience:

Farmers Market • Local Airport • Farms • Warehouses •
Industrial Estates • Food Premises • Private Houses • Country
Estates • Building Sites • Local Councils • Schools •
Day Nurseries • Care Homes

We invite you to visit our stand at
The Blakesley Show, 5th August '23

HOWKINS &
HARRISON

We're behind you every
step of the way.



Proud to support the **BLAKESLEY SHOW**

Working to support land owners, farmers, developers & stakeholders with all aspects of land strategy, planning, change of use & diversification of all types of buildings, sales, acquisition and management, throughout the region.

Exceptional service, complete peace of mind.

What can we help you with this year?

Contact one of our teams to discuss your land or property needs:

Ashby de la Zouch
01530 877977

Coventry
02476 227384

Lutterworth
01455 559203

Rugby
01788 564680

Henley-in-Arden
01564 793137

Atherstone
01827 721380

Daventry
01327 316880

Northampton
01604 823456

Towcester
01327 397979

The London Office
0207 839 0888

Planning / Estate Agency / Lettings / Auctions / Farm & Rural Services / Valuations

WE COVER SMALL FARMS, LARGE FARMS AND EVERYTHING IN BETWEEN



From sheep farmers to arable farmers.
Flower growers to poultry farmers.

NFU Mutual is proud to insure over 75% of UK farms with our Farm Select insurance. But we want more farms to benefit from great cover and local service. NFU Mutual has introduced Farm Essentials insurance – designed to meet the needs of smaller farms.

As your local agency, we are close by and can provide expert advice and hands-on support when you need it.

Call **Coventry Office** on **02476 444519**

NFU Mutual, 6 Eastwood Business Village,
Harry Weston Road, Binley Business Park,
Coventry, CV3 2UB



NFU Mutual
FARM INSURANCE



ONE
FABRICATION LTD

Adam - 07817036778
onefabrication@hotmail.com

@one_fabrication



All fabrication work undertaken;

- Gates and Barriers.
- Railings, Handrails and fencing.
- Bucket Repairs.
- Machinery Repairs.
- Bespoke/Custom Builds.
- Designing, measuring and fitting.

Agriculture - Demolition - Commercial - Residential

Get in touch today for a free, no obligation quote on any fabrication work required.

FINISHING CATTLE? GROWING CATTLE? FEEDING SHEEP?

**BERRYSTOCK
FEEDS**



Do you want HIGH PERFORMANCE, COST EFFECTIVE, FULLY ASSURED and COMPLETE FEEDS? Then contact BERRYSTOCK FEEDS:

Tel: 01788 890320 E-Mail: john@berryfieldsfarm.co.uk Web: www.berrystockfeeds.co.uk

BERRYFIELDS FARM, DAVENTRY, NN11 8NP



THE MIDLANDS MART

RUGBYFARMERSMART.COM

FORTHCOMING SALES

**THURSDAY 10TH AUGUST
SALE OF STORE CATTLE & STORE LAMBS**

**Vendors who are wishing to sell stock
please feel free to contact:**

Tom Wrench - 07774 723758 Market Manager & Auctioneer

Tim Webster- 07437 101163 Auctioneer & Fieldsman

Emma Coupland- 07808 271218 Fat Cattle Auctioneer

Charlie Betteridge- 07760266701 Fieldsman

Nathan Shaw-07460120293 Yard Manager

who will gladly make

A FREE ON FARM VISIT & VALUATION



Follow us on social media:

Facebook & Twitter - @RFMMidlandsMart

Instagram - rugbyfarmersmartLtd